

# COLLIER VILLAGE

1952-1985 HOWELL MILL ROAD, ATLANTA, GA 30318



*Collier Village is a collection of high-profile storefronts lining Howell Mill Road at its intersection with Collier Road. A mix of new construction and thoughtfully renovated mid-century buildings, the shops have excellent visibility, access, and parking. Over 1,000*

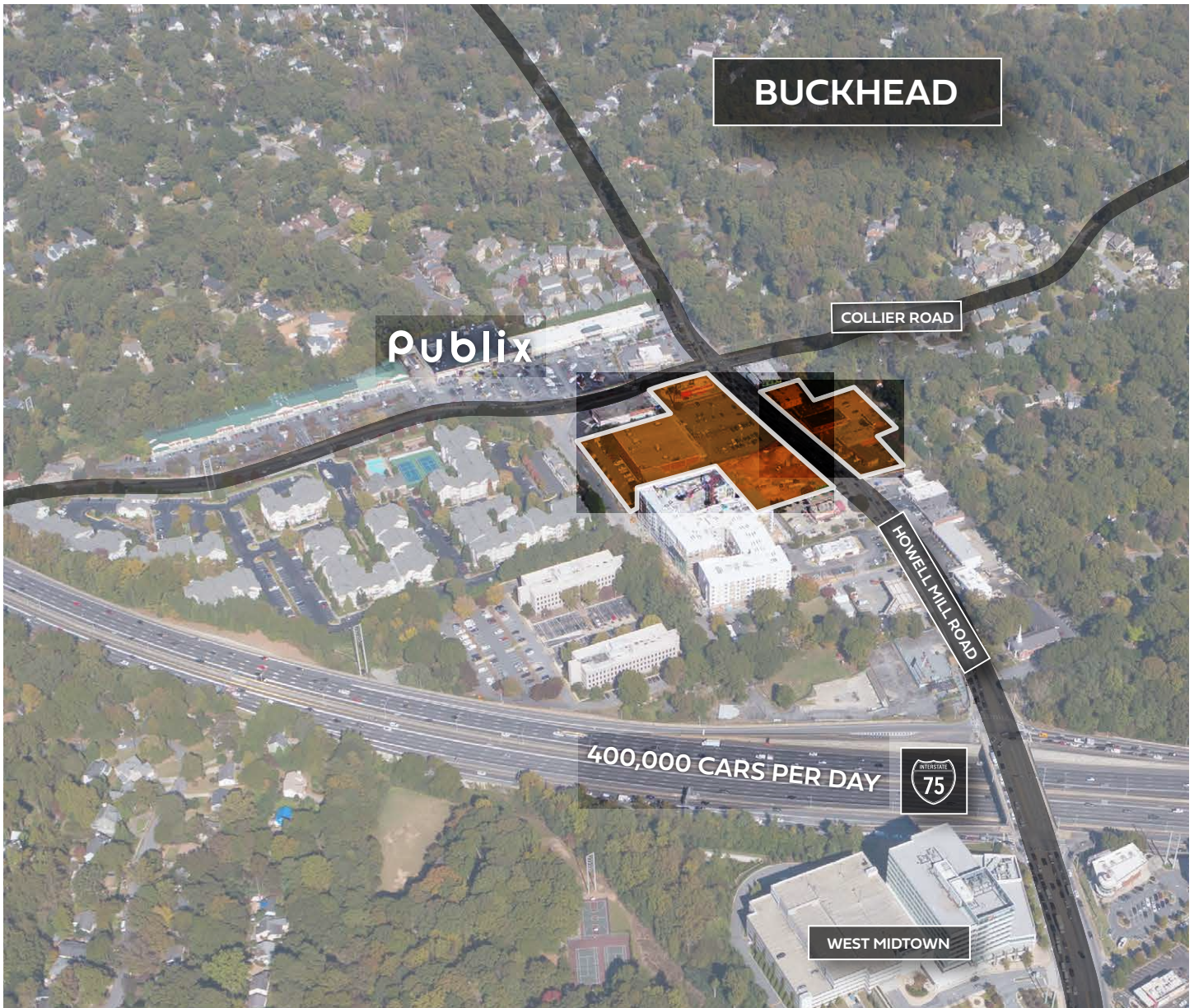
*residences are within walking distance and the property is nestled in a high-income Buckhead neighborhood. Over 400,000 cars per day travel I-75 just south of the site, providing regional access and proximity to West Midtown and Piedmont Hospital.*





# COLLIER VILLAGE

1952-1985 HOWELL MILL ROAD, ATLANTA, GA 30318



## TRAFFIC COUNTS



**35,800 CPD**  
Howell Mill Road



**400,000 CPD**  
Highway 75 N/S

## 2023 DEMOGRAPHICS

**Population**

**1 MILE**

16,251

**3 MILE**

142,960

**5 MILE**

360,445

**Households**

8,625

72,901

178,750

**Average Household Income**

\$160,470

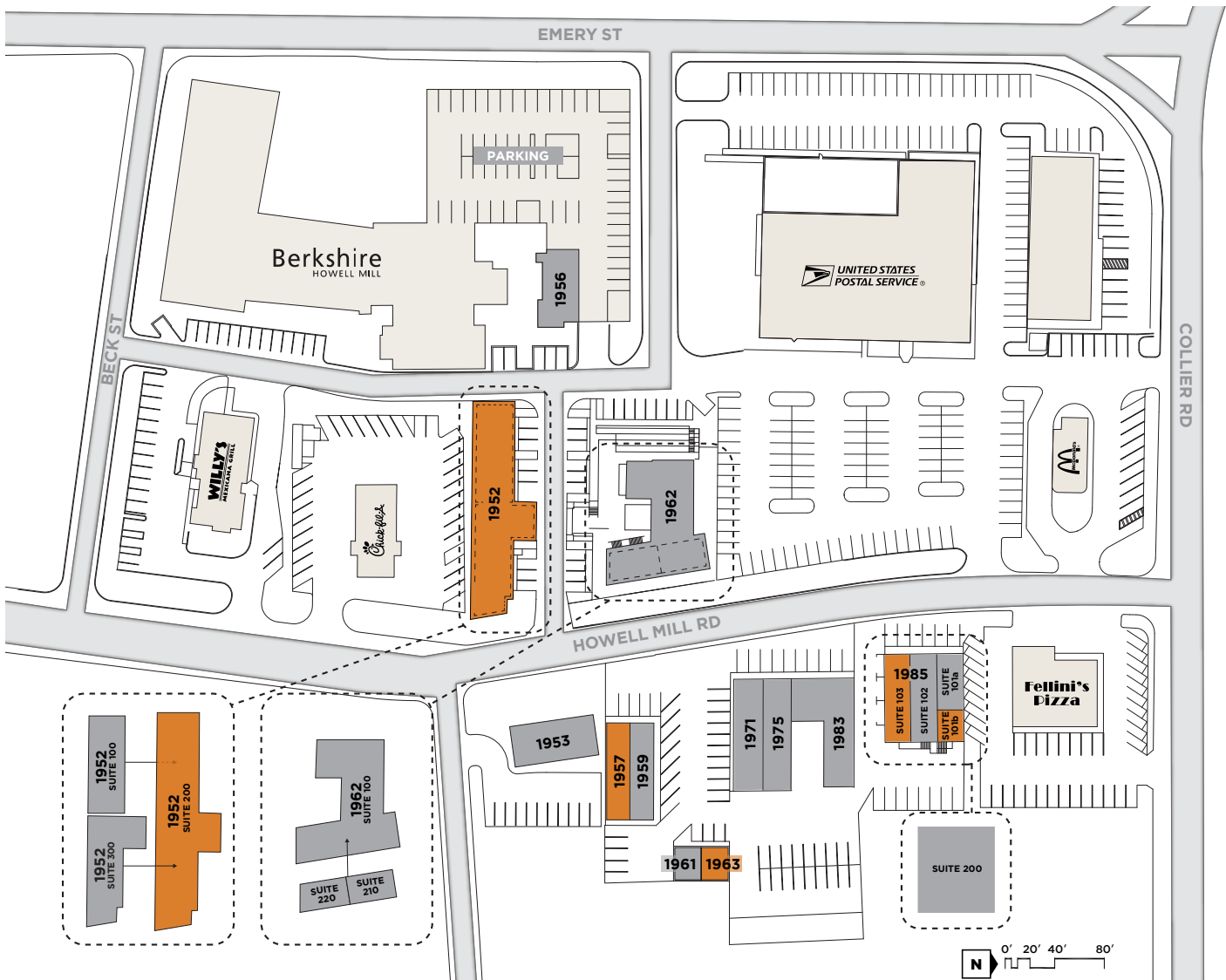
\$157,591

\$145,549



# COLLIER VILLAGE

1952-1985 HOWELL MILL ROAD, ATLANTA, GA 30318



SUITE	TENANT	RSF	SUITE	TENANT	RSF
1952, Suite 100	Healey Weatherholtz Properties	1,495	1971	Zunzi's	2,195
<b>1952, SUITE 200</b>	<b>AVAILABLE</b>	<b>3,773</b>	1975	T-Mobile	2,135
1952, Suite 300	J. Ryan Duffey Architect	1,617	1983	Mr. C's Bar and Grill	2,800
1953	Havoline Express Lube	1,872	1985, Suite 101a	Arden's Garden	960
1956	Circle Sushi	1,600	<b>1985, SUITE 101B</b>	<b>AVAILABLE</b>	<b>440</b>
<b>1957</b>	<b>AVAILABLE</b>	<b>1,600</b>	1985, Suite 102	Coatly	1,300
1959	Dominos Pizza	1,600	<b>1985, SUITE 103</b>	<b>AVAILABLE</b>	<b>1,320</b>
1961	West Barber Shop	625	1985, Suite 200	Scott King Circuit Training	4,008
1962, Suite 100	Howell's Kitchen & Bar	4,888	1984	United States Postal Service	25,806
1962, Suite 210/220	Trackwest Partners	2,631	1994	McDonalds	1,503
<b>1963</b>	<b>AVAILABLE</b>	<b>625</b>			
					<b>TOTAL: 63,193</b>





# COLLIER VILLAGE

1952-1985 HOWELL MILL ROAD, ATLANTA, GA 30318

